

Prefabricated Building Co.
A member of maani Ventures

☎ T +962 (6) 412 91 19
☎ F +962 (6) 412 93 39
✉ maani@maani.com
🌐 www.maani.com

Practicality, Reliability & Speed Under One Roof



Company Profile

maani PREFAB began producing its prefabricated modular buildings in 1974. It soon developed into Jordan's leading company in the field, rapidly expanding its services into Libya, Sudan, Qatar, Saudi Arabia and Iraq. The company has an aggressive program to add the remaining MENA region countries within the next five years.

maani PREFAB introduced and advanced light gauge steel buildings system (LGS) after identifying the increasing demand for this type of buildings in the MENA region. This new building system provides a competitive advantage of quick construction along with the full functionality and practicality of traditional construction, in addition, to being much more environmentally friendly and green.

Responding to the increased demand from the construction industry for holistic solutions to site camps, **maani PREFAB** started to construct complete camps, including prefab buildings and all necessary electricity, water and sewerage infrastructure, as well as link roads and landscaping.

Vision

To be the leaders in our targeted markets in the production and construction of prefabricated building solutions through continuous improvement and innovation driven by changing customer need.

Mission

To achieve maximum client satisfaction by developing and producing creative, innovative and market-leading solutions.

Our customers include:

- General contractors who require on-site shelters and campsites.
- Oil and gas exploration companies.
- Army, police and private security companies.
- Companies requiring any type of housing or offices
- Housing and office buildings.
- UN entities and NGOs.





Client: AREVA
Project: Uranium exploration project
Date: 2009
Location: Siwaqa, Jordan
Area: 670m²



Client: German Jordanian University
Project: Modern prefab lecture rooms for GJU's campus
Location: Madaba Street Amman – Jordan

Why Use PREFAB?

Quick to construct and dismantle.

Our buildings are modular and can be put together with amazing speed.

Re-usable for different projects.

Some of our clients have moved the same units to more than seven project locations.

High thermal insulation.

We use rigid polyurethane insulation to ensure the most effective insulation possible.

The **Light weight** and **flexible** structure leads to considerable savings in time and money in the construction of foundations and civil works, while also ensuring high resistance to earthquakes.

Structural Panels with **integrated steel sub-frame** eliminate the need for elaborate unaesthetic structural steel elements.



Client: Italian Embassy
Project: Italian Hospital
Date: 2013
Location: Azraq – Jordan



Client: Tripoli Airport
Project: Engineering camp
Date: 2008
Location: Tripoli, Libya
Area: 20000 m²

Two Story Buildings

In order to optimize the usage of space in congested areas, we have developed the two story prefab unit, which reduces the need for space.



Client: New York Institute of Technology (NYIT)
Project: Modern prefab lecture rooms for NYIT's campus
Date: 2008
Location: Amman, Jordan
Area: 1800m²

Product line

Modular Prefabricated Buildings

Our Modular/Panel type buildings are constructed on site using standard panels connected with special accessories that utilize bolted connections.

maani PREFAB offers different wall and roof panels, with cladding options for exterior and interior. They include the following:

For Exteriors:

- PVC Siding
- Standard steel sheets (PGS)
- Cement boards

For interiors:

- Decorated wood boards
- Wood cladding
- Fire-rated gypsum boards
- Standard steel sheets (PGS)





Product line

Full Camp Site Solutions

maani PREFAB also builds full campsites inclusive of all buildings and infrastructural requirements, starting from the excavation and levelling of the site and ending with the furnishing of the prefabricated buildings.



Mobile communications Unit (MCU)

A self-loading self-offloading Mobile Communications Unit, also known as MCUs. The unit has a telescopic lattice tower as per clients requirement. The main function of MCUs is to provide network coverage in uncovered and newly developed areas, in addition to strengthening network signals in crowded & dense events for major telecommunications companies.



Product line

Communication Equipment Shelters

This line of prefabricated shelters was specifically designed in 1993 to serve the growing telecommunication sector in the region. These thermally insulated and hermetically sealed units are ideal for housing heavy-duty electronic and communication equipment such as those used by GSM service providers.



Fully equipped shelter

From our experience in the GSM shelters and especially for export markets, we developed the fully equipped shelter to provide a total solution for our telecom sector customers.





Product line

Portable Type

These mobile/relocatable units are the perfect solution for organisations which are on the move. The units are placed on a sturdy metal base (a steel chassis) that is elevated from the ground, allowing for swift and easy relocation.





Practicality, Reliability & Speed
Under One Roof



Company Profile

maani LGS

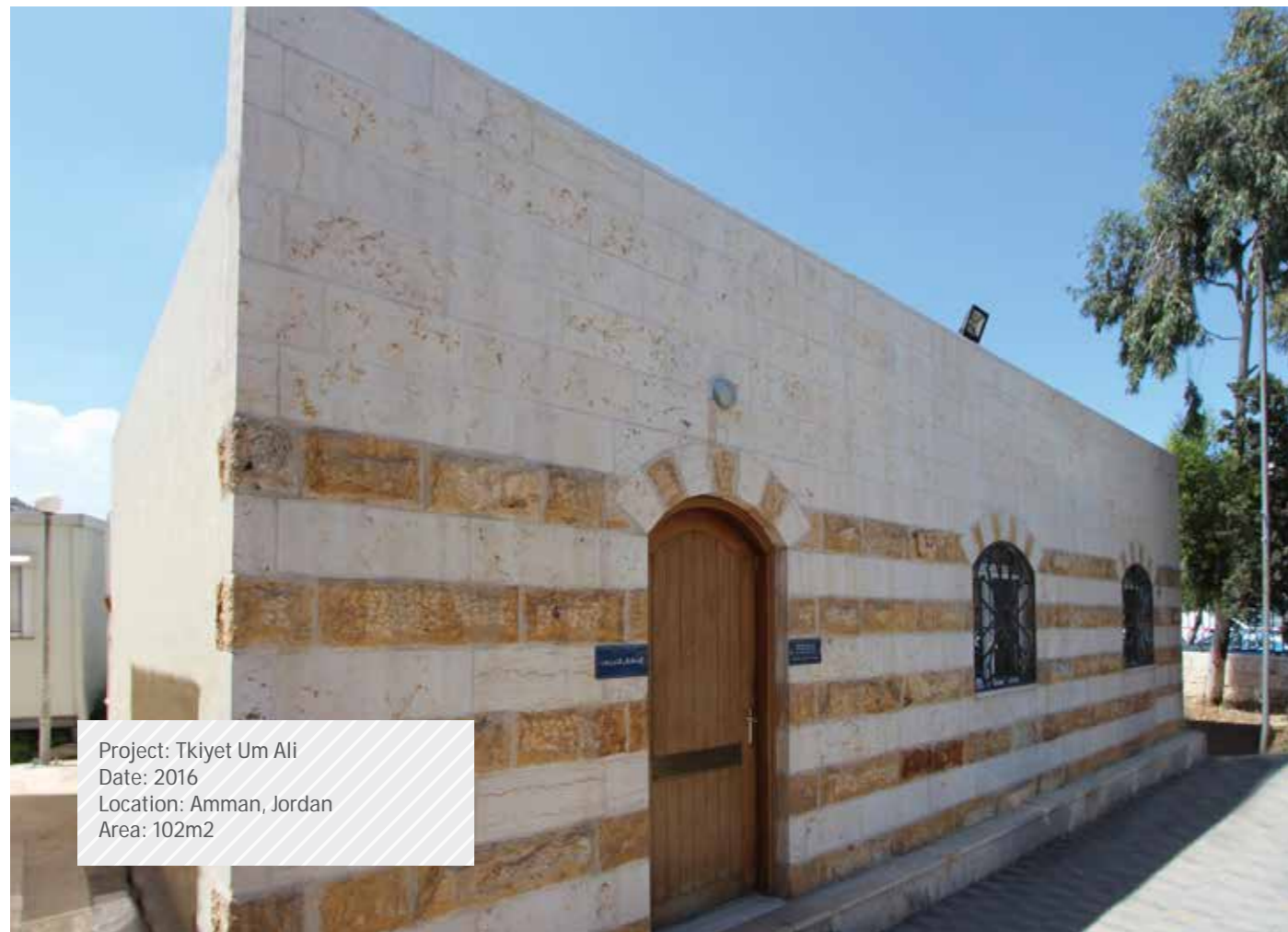
Providing renowned Light Gauge Steel (LGS) building solutions, maani LGS offers unparalleled quick, reliable, and automated production and construction capabilities. This eliminates the requirement for skilled labour, whilst securing a quicker project completion date without compromising superior quality for our clients.



Why Use LGS?

- More Aesthetic than normal prefab building.
- Modern and flexible design possibilities.
- Fire-rated walls of up to two hours where needed.
- Minimal effect on the environment.
- Speed of construction.
- Light weight, specially useful for rooftop applications where there are loading constraints.





Project: Tkiyet Um Ali
Date: 2016
Location: Amman, Jordan
Area: 102m2



Project: AL-Majal Business Park
Prefabricated Buildings
Date: 2015
Location: Burjessia, Iraq
Area: 13000m2



Client: Al-Nahr Company
Project: Ghadames-Zwara Ben Ghasir
Owners Camp
Location: Tripoli - Libya
Area: 694m2



Client: Private
Project: Private Farm
Date: 2011
Location: Al-Salt – Jordan

Product line

Single Storey

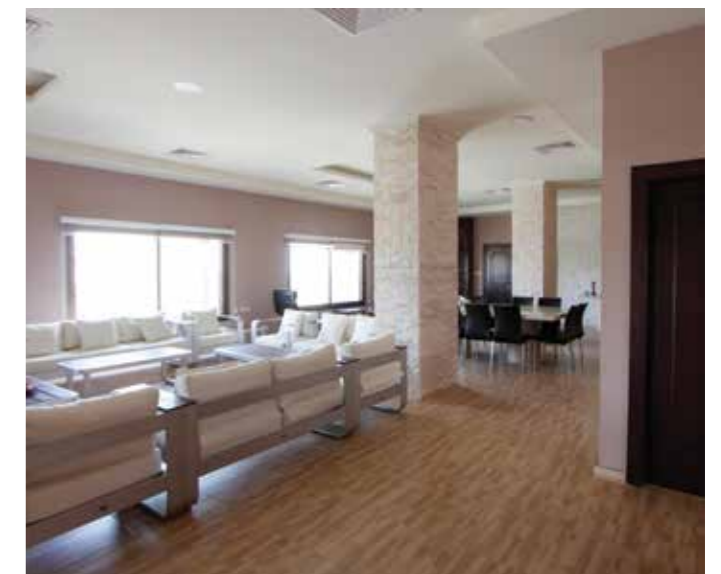
This line can be the optimum Solution for customers looking for fast building system with international fire rating characteristics in addition to modern design and wide range of cladding options. The external can be clad with cement boards, MGO boards with weather shield paint, natural stone cladding or UPVC siding.



Product line

Double Storey

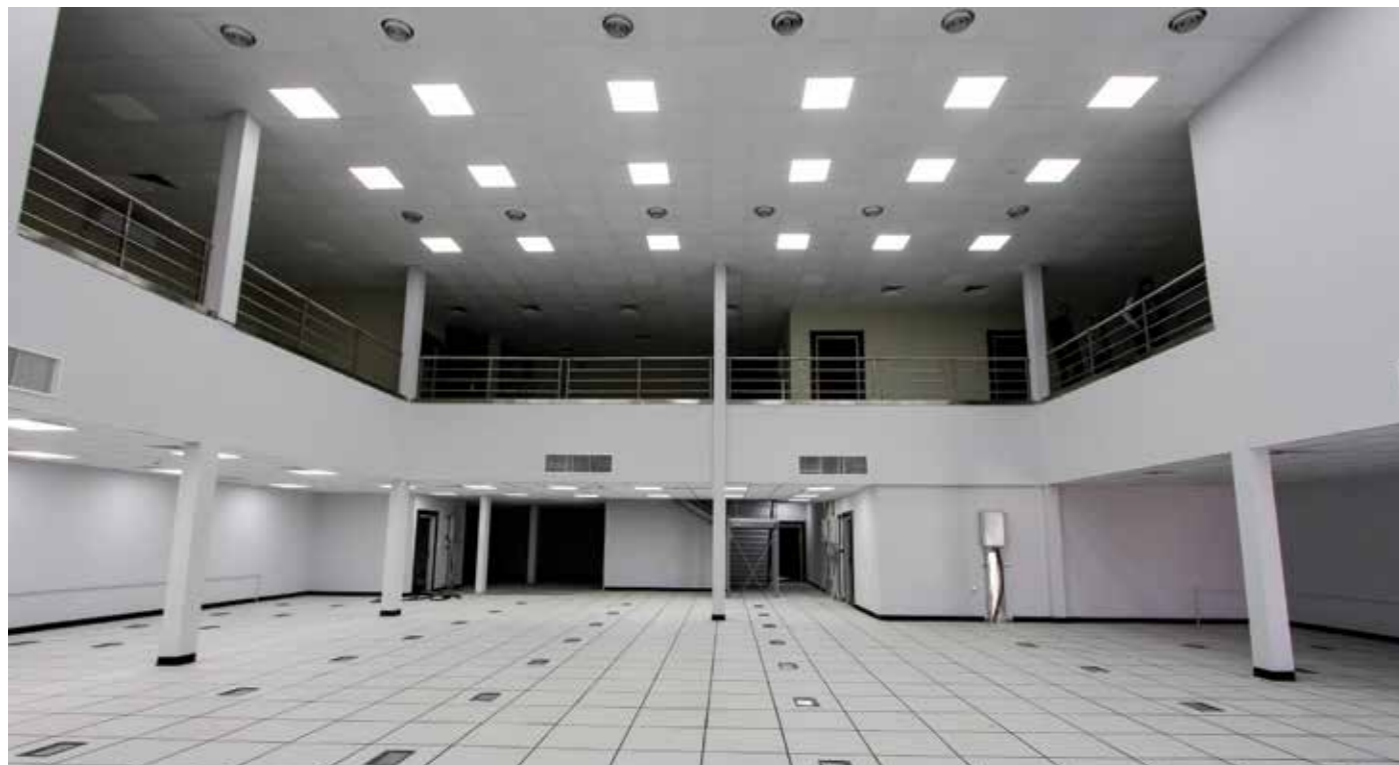
LGS system can be used to build two story buildings with minimal civil works and foundations.



Product line

Rooftop

LGS buildings are light weight which makes it the ideal solution for an additional floor on an existing building while minimizing the added load on the original structure and the foundations.



Product line

LGS as Cladding to Steel Structure

LGS wall system is the perfect solution as external walls and internal partitions for steel multi-storey buildings. Their lightweight allows the designer to minimize the design loads and thus providing an economical solution to the owner or developer.



Fire Rated Walls

FRW180, FRW90, FRS60, FRS45

Fire-Rated Partitions produced by Prefabricated Buildings Co. according to European EN standards, and approved by Jordanian Civil Defense Directorate.

Advantages:

- No need for any civil works.
- Clean work area during the installation process.
- Easy and fast installation.
- Recyclable material.
- Ease of dismantling and removal.

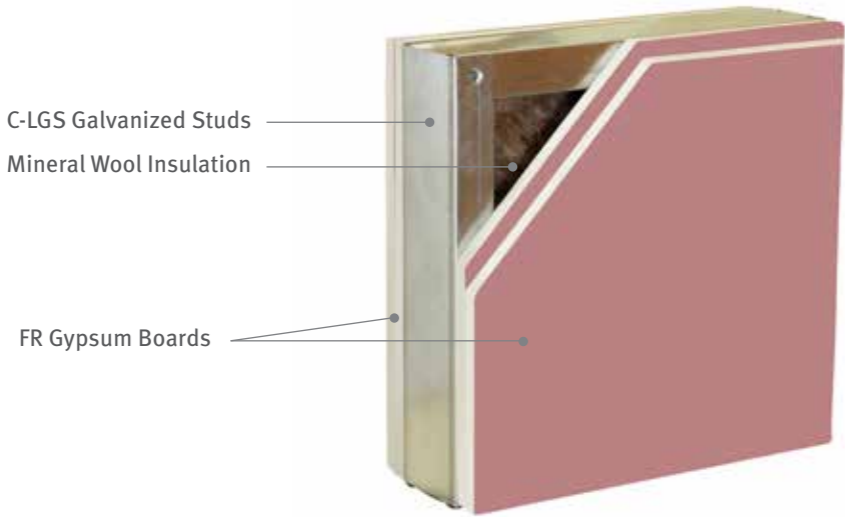
Fire Ratings

Performance Rating

A. Fire Rating Dry Wall Construction As per EN 1363-1, EN 1364-1

Maani FRW 180

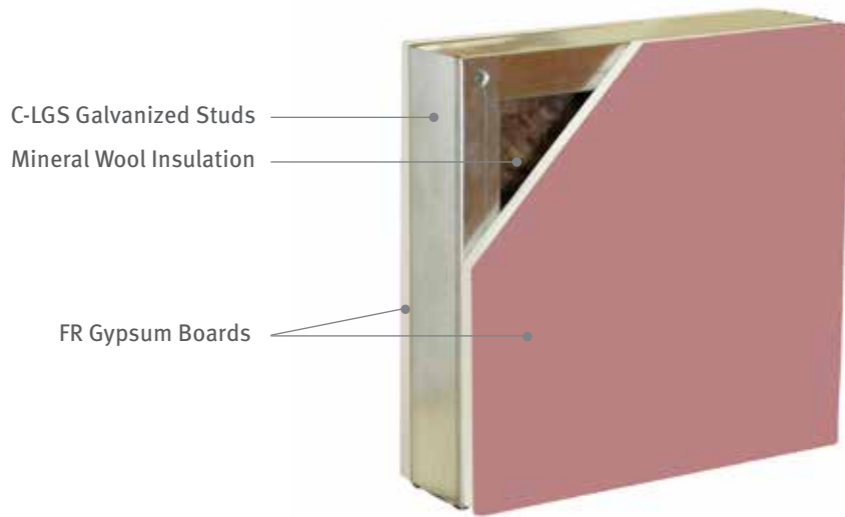
Wall Thickness	Wall Configuration	Maximum Height	Maximum Width	Fire Rating
149 mm	2 Layers Gypsum Board 2 X 15mm Insulation: Mineral Wool 50mm C-LGS Studs: 89 X 44mm, 0.75mm thick	up to 4000mm	Unlimited	Integrity: Up to 3 Hours Insulation: Up to 2 Hours



B. Fire Rating Dry Wall Construction As per EN 1363-1, EN 1365-1

Maani FRW 90

Wall Thickness	Wall Configuration	Maximum Height	Maximum Width	Fire Rating
119 mm	2 Layers Gypsum Board 1 X 15mm Insulation: Mineral Wool 50mm C-LGS Studs: 89 X 44mm, 0.95mm thick	up to 4000mm	Unlimited	Integrity & Insulation: Up to 1:30 Hours



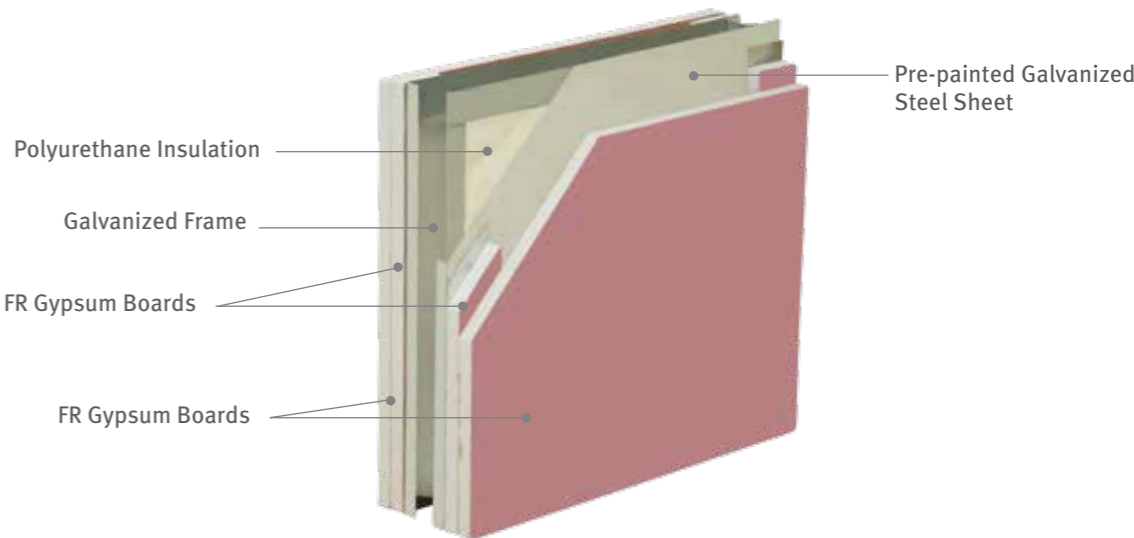
Fire Ratings

Performance Rating

A. Fire Rating Dry Wall Construction As per EN-1363-1, 1364-1

Maani FRS 60

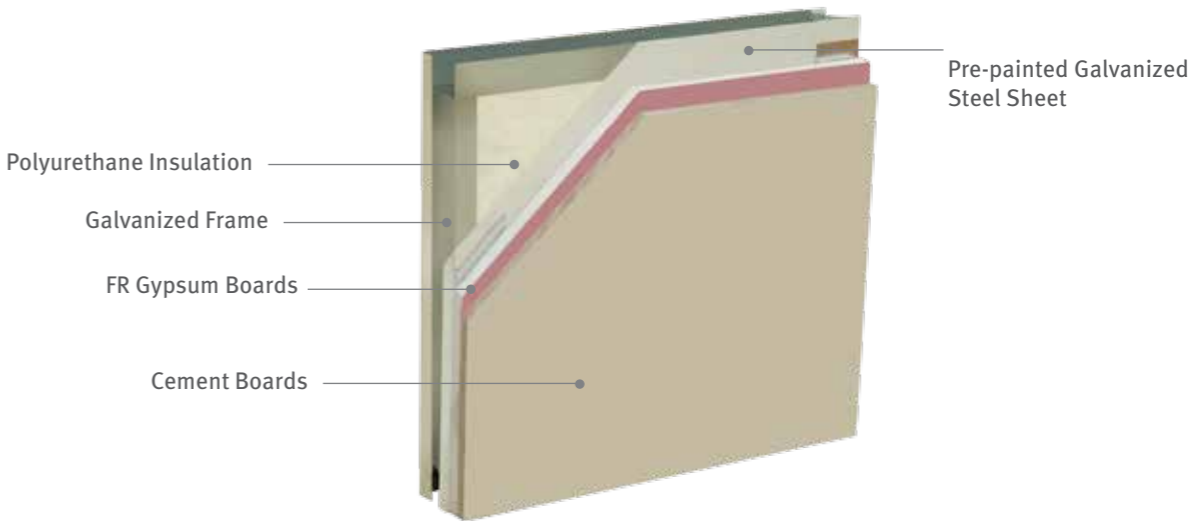
Wall Thickness	Wall Configuration	Maximum Height	Maximum Width	Fire Rating
114 mm	Sandwich Panel 1 X 50 mm 2 Layers Gypsum Board 1 X 15 mm Insulation: Polyurethane 49 mm	up to 4000 mm	Unlimited	Integrity & Insulation: Up to 1 Hours



B. Fire Rating Dry Wall Construction As per EN-1363-1, 1364-1

Maani FRS 45

Wall Thickness	Wall Configuration	Maximum Height	Maximum Width	Fire Rating
79 mm	Sandwich Panel 1 X 50 mm 1 Layer Gypsum Board 1 X 15 mm 1 Layer Cement Board 1 X 12 mm Insulation: Polyurethane 49 mm	up to 4000 m	Unlimited	Integrity & Insulation: Up to 45 min



Technical Specifications

External and internal walls

All walls are sandwich panels with different external and internal finishes and rigid polyurethane foam insulation. We have the ability to use any kind of material for wall cladding from the inside or outside, including wood, steel sheet, Gypsum boards, cement boards, masonite and decorative boards.

Doors

Sandwich panel construction using weatherproof galvanized pre-painted steel finish for the outside doors, and decorative boards for the inside doors.

Electrical works:

Conducting: All conduits are flexible, PVC pipes inside sandwich panels and between roofs.
Sockets: 13amp white plastic three pin sockets are provided.
Sockets and Switchers are Vole type.
Lighting: Consists of globe lights or local double batten standard fluorescent lights LED lighting can be used.
Distribution Board: All boards are according to load.
Earthling and earth leakage circuit breakers are optional.

LGS System

For buildings using LGS system the specifications change as follows:

Walls and Roof: Composed of cold rolled galvanized high gauge steel section designed, detailed and roll formed in a CAM/CAD integrated system.

Final finishing can be cement board, gypsum, aluminum siding, or as specified by the designer.

Note: Electrical, civil, mechanical and sanitary works can be changed as per client's requirements.

External Roofing

Composed of profiled, pre-painted white galvanized steel sheets, fixed on steel skeleton from the outside and designed according to loads, blanket thermal insulation 50mm is provided under the steel sheet.

Civil Works

Local mosaic of ceramic tiles finish fixed over a concrete slab 10cm thick on top of base course aggregate 15cm thick, or according to client's request.

Internal Ceiling

Of white gypsum board 600x600mm fibre, supported on a pre-painted steel grid of T-sections. For portable units, ceilings can be comprised of sandwich panels or decorative boards, either of which are fixed on a wooden grid with insulation.

Windows

Aluminium windows of standard sizes are used. All windows are fixed on a pre-painted steel sub frame.

Sanitary Works

Porcelain washbasins on steel brackets, with showers measuring 80x80cm and constructed from pre-painted steel. Toilets are fitted with cisterns and necessary hardware. All porcelain is white in color.

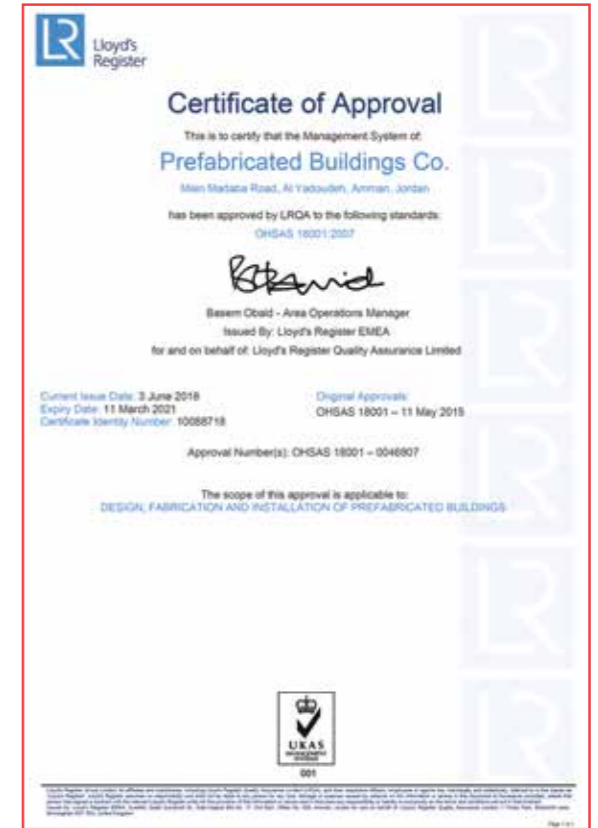
Steel Chassees and Flooring

(For portable units only) PVC rolls or tiles are used for flooring on our portable units, which are laid on wooden boards that are fixed on galvanized, corrugated steel sheets for protection. The steel chassis can be of the portable type, the skid type or carried on axles and wheels (For portable units only).

Company Certificates



Quality Management System



Health & Safety Management System



IFC



Department - Jordan Civil Defense

Clients

Our Clients

(AREVA) Jordanian French Uranium Mining Co.	Jordan Refinery Co.
Aegek Greece	KHCC
Al Dammam University	Koray Insaat
Al Nahr Co.	Kula Com
American Embassy	Lotte Engineering & Const. Co. Ltd
Arab Potash Co.	Loyalty Support Services
Arab Scientist for Education – MEU	Mitsubishi Heavy Industries of Japan
Armed Forces	Morganti
Ascialcell - Iraq	MSF – Holland
Astra Co.	MTN - Sudan
Attila Dogan - Turkey	Nafith Logistics Company
Aysel Construction & Trade Co. Inc.	Odebrecht Engineering and Construction Limited
Boskalis & Archirodon J.V. C.C.C. - Impregilo J.V.	Orange - Jordan
Civil Aviation Authority	Orascom Telcom - Iraq
Civil Defense Department	Phonics Global Telecom
Consolidated Contracting Co. (CCC)	Public Security Departmnet
Doosan Heavy Industries& Constructions	Ret-Ser Engineering Agency of Taiwan
Express	Rezayat Projects Ltd.
Field Energy Services	RSICA - The Red Sea Institute of Cinematic Arts
French School	Salini Construttori - Italy
Gama Guc Sistemleri Muhendislik Ve Taahhut A.S.	Saraya Aqaba
German Jordanian University	SEPCO III Electric Power Construction Corp..
Ghor El-Safi Chemical Plant	Som Dat Builders - India
Hidrograndja Civil Eng. Co. of Yugoslavia	Spie Batignolles of France
ICRC	Tarmac of UK
Infilco Degremont	The Joint venture J&P overseas ltd / J&P - Avax S.A.
IOM	The Royal Court - Jordan
Jacobs Engineering	Umniah
Jet Net Sudan	UNICEF
Jordan Cement Manufacturing Co.	UNOPS
Jordan Intelligence Department	Witribe
Jordan Phosphate Mining Co.	Zain (Jordan - Iraq - Sudan



maani VENTURES is one of Jordan’s leading industrial groups that employs more than 700 engineers, technicians, and highly skilled laborers and professionals. Established in Amman in 1974 with the ultimate vision of developing a new generation of customized engineering products and solutions, maani VENTURES has expanded into a conglomerate of five companies that service Jordan, Egypt, Iraq, Kuwait, Libya, Oman, Saudi Arabia, Sudan, UAE and Qatar. Today, and with our extensive expertise that spans over four decades, maani VENTURES services the MENA region and beyond through two core business divisions – Construction and Furniture.

maani CONSTRUCTION

Through our six product lines and companies at maani CONSTRUCTION, we supply a diverse range of construction products that provides high-value and customized engineering that meet the most rigorous time constraints. From steel hangars and campsites to portable cabins and three-story buildings and much more, maani CONSTRUCTION offers:

- maani PREFAB** – specializes in construction of high end prefabricated buildings.
- maani STEEL** – specializes in design, supply, fabrication, and erection of pre-engineered buildings.
- maani METALFORM** – specializes in producing Underwriters Laboratories (UL) approved fire rated steel doors, architectural sheet metal works and cladding.
- maani LGS's** – specializes in using automated production and construction capabilities to provide light gauge steel building solutions.
- maani STRUCTURES** – specializes in structural steel projects such as power station, cement and petrochemical plants, oil and gas projects, as well as high-rise buildings.
- maani SOLAR** – specializes in the delivery of custom designed turn-key Photovoltaic (PV) solar renewable energy solutions using German technologies and in-house expertise, offsetting almost any electricity demand.

maani FURNITURE

Building on our core strength of customized engineering, maani FURNITURE through its different companies is one of the region’s leading companies that provides contract furniture, bent wood, educational and professional labs, auditoriums, office and classroom furniture, and much more. This is serviced through the following five product lines:

- maani OFFICE CONCEPTS** – specializes in the production of high quality, functional, and durable office furniture solutions.
- maani LEARNING & COMMUNITY** – specializes in providing a wide range of education and community institutional furniture for classrooms, lecture halls, auditoriums, libraries, and more.
- maani LABS** – specializes in finding solutions for various types of laboratory furniture including learning, industrial, and research laboratories.
- maani COMPONENTS** – specializes in the production of bent wood components.
- maani CONTRACT FURNITURE** – specializes in turnkey contract furniture solutions that produce fire rated wooden doors, as well as operates in the luxury fit-out industry.





maani LGS
CONSTRUCTION

maani LGS

Prefabricated Building Co.
A member of maani Ventures

☎ T +962 (6) 412 91 19
☎ F +962 (6) 412 93 39
✉ maani@maani.com
🌐 www.maani.com