



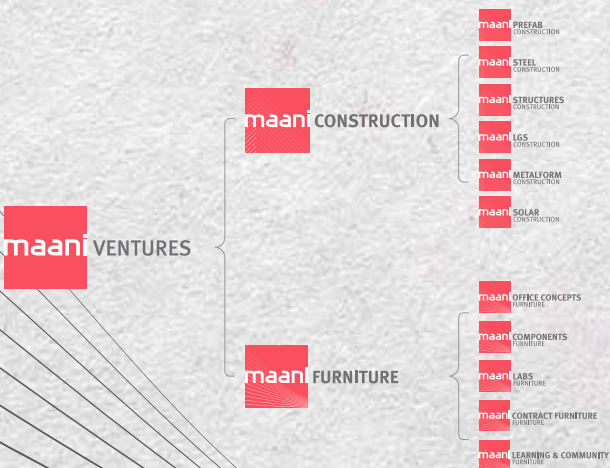
Cumulative Engineering



Cumulative Engineering

maani VENTURES

maani VENTURES is one of Jordan's leading industrial groups that employs more than 700 engineers, technicians, and highly skilled laborers and professionals. Established in Amman in 1974 with the ultimate vision of developing a new generation of customized engineering products and solutions, maani VENTURES has expanded into a conglomerate of five companies that service Jordan, Egypt, Iraq, Kuwait, Libya, Saudi Arabia, Sudan, UAE, and Qatar. Today, and with our extensive expertise that spans over four decades, maani VENTURES services the MENA region and beyond through two core business divisions – CONSTRUCTION and FURNITURE.





Cumulative Engineering

VISION / MISSION

In order to exceed customers' and stakeholders' expectations, maani VENTURES aims to continuously be ahead of the market's ever-changing needs and challenges. By providing customized engineering products and solutions, it caters to the MENA region and beyond dynamically.

CORPORATE CORE VALUES

At maani VENTURES, we pride ourselves on:

- Being client-oriented.
- Partnership - we believe in "win-win".
- Trust and integrity in everything we do.
- Development and innovation.
- Sustainability in our products & services.
- Teamwork.
- Diversity.
- Responsibility and accountability.
- Employee engagement and development.
- Social responsibility.



maani CONSTRUCTION



maani CONSTRUCTION

Through our six product lines at maani CONSTRUCTION, we supply a diverse range of construction products that provides high-value and customized engineering that meet the most rigorous time constraints. From steel hangars and campsites to portable cabins and three-story buildings and much more, maani CONSTRUCTION offers:

- maani PREFAB – specializes in construction of high-end prefabricated buildings.
- maani STEEL – specializes in design, supply, fabrication, and erection of pre-engineered buildings.
- maani STRUCTURES – specializes in structural steel projects such as power stations, cement and petrochemical plants, oil and gas projects, as well as high-rise buildings.
- maani METALFORM – specializes in producing Underwriters Laboratories (UL) approved fire rated steel doors, architectural sheet metal works, and cladding.
- maani LGS – specializes in using automated production and construction capabilities to provide light gauge steel building solutions.
- maani SOLAR – specializes in the complete integration of solar (PV) energy solutions into existing facilities, or new developments using German technology and in-house expertise to offset almost any electricity demand.



maani PREFAB

Producing prefabricated modular buildings since 1974, maani PREFAB has set the industry standard for the country. With rapid growth and success, our services have expanded to neighboring countries such as Iraq, Libya, Saudi Arabia, Sudan, and Qatar, with the necessary capabilities to service the entire MENA region and beyond.

As the industry evolved and the need for holistic solutions of campsites grew, maani PREFAB responded by constructing comprehensive campsites, featuring prefabricated buildings that are complete with the necessary electric, water, and sewage infrastructure, as well as landscaping and road linkage.

Always a pioneer, maani PREFAB grasped the opportunity to design the country's first cellular equipment shelter in partnership with Fastlink, now Zain, when mobile cellular services were introduced to Jordan.

Practicality, Reliability & Speed Under One Roof





maani STEEL

With a qualified team committed to excellence, maani STEEL specializes in designing, manufacturing, and constructing efficient and durable pre-engineered steel buildings. Our commitment to sustainable excellence, attention to minute detail, high-caliber quality workmanship as well as dedicated services ensures our clients' satisfaction.

Whether considering the construction of a new space or the expansion of an existing space such as a warehouse, cold store, sports hall, aircraft hangar, or any other steel building application, maani STEEL delivers customized pre-engineered steel building solutions to cater to any requirement.

Tailor-made Pre-engineered Building Solutions



maani STRUCTURES

The latest company of the maani VENTURES group is maani STRUCTURES. Specializing in structural steel projects such as power stations, cement, and petrochemical plants, as well as oil and gas, high-rise buildings and other industrial and commercial projects, our services have been provided throughout Jordan, the GCC, North Africa, and beyond.

Utilizing the most technologically advanced engineering software, maani STRUCTURES connects design and shop drawings while also manufacturing steel members using state-of-the-art machines such as CNC drilling lines, plate processors, and shot blasting machines.

Structural Steel Solutions



maani LGS

Providing renowned Light Gauge Steel (LGS) building solutions, maani LGS offers unparalleled quick, reliable, and automated production and construction capabilities. This eliminates the requirement for skilled labour, whilst securing a quicker project completion date without compromising superior quality for our clients.

Practicality, Reliability, & Speed Under One Roof



maani METALFORM

Specializing in sheet metal fabrication and dedicated to serving comprehensive requirements of any building application, maani METALFORM is the leading choice for delivering a wide range of customized metal products. With its punching, bending, and forming sheet metal manipulation capabilities, maani METALFORM is the primary solution for contracting, engineering, and interior design communities.

Durable UL certified fire-rated door assemblies, architectural metal works, stainless steel furnishings and signage, metal lockers, and sturdy building facades are only a few of our high-quality customized products that engineers, industrialists, architects, and designers trust. Our clients' confidence in maani METALFORM reaffirms our position in delivering the most convoluted and intricate interior and exterior metal fixtures imaginable.

Located in King Abdullah Industrial City-Sahab, maani METALFORM has a region-wide reach serving across the Middle East, GCC, and North Africa. Our qualified designers and engineers, along with our state-of-the-art machinery, will ensure exceeding the expectations of any metal forming requirement.

The Sheet Metal Experts



maani SOLAR

maani SOLAR is an offspring of both maani VENTURES' extensive industrial expertise and experience, as well as its commitment to facing current and future global challenges and market needs.

Backed by revered German technology and engineering, maani SOLAR specializes in the delivery of turn-key PV solar renewable energy solutions. This includes the complete design, procurement, installation, testing, and commissioning of scalable photovoltaic solar systems, all of which are custom-designed to offset almost any electric demand.

Ranging from PV on steel structures and rooftops, to open terrain and off-grid applications that are coupled with prefabricated buildings, our qualified team delivers the optimum solution for our clients.

Energy for Life





maani FURNITURE

Building on our core strength of customized engineering, maani FURNITURE is one of the region's leading companies that provides contract furniture, bent wood, educational and professional labs, auditoriums, office and classroom furniture, and much more. This is serviced through the following five product lines:

- maani OFFICE CONCEPTS – specializes in the production of high-quality, functional, and durable office furniture solutions
- maani LEARNING & COMMUNITY – specializes in providing a wide range of education and community institutional furniture for classrooms, lecture halls, auditoriums, libraries, and more
- maani LABS – specializes in finding solutions for various types of laboratory furniture including learning, industrial, and research laboratories
- maani COMPONENTS – specializes in the production of bent wood components
- maani CONTRACT FURNITURE – specializes in turnkey contract furniture solutions that produce fire rated wooden doors, and operates in the luxury fit-out industry



maani OFFICE CONCEPTS

For over three decades, maani OFFICE CONCEPTS has designed workspaces that are as inviting as they are functional. Expanding on our expertise in developing prefabricated office buildings, maani OFFICE CONCEPTS adopts a holistic service approach that embarks on furnishing office workspaces as well as building them.

maani OFFICE CONCEPTS is an integral part of maani VENTURES, and since its inception, it continues to uphold the company's legacy by providing high-quality, comprehensive furniture solutions throughout the region. With our internationally renowned partners and suppliers from Italy, Spain, and around the globe, maani OFFICE CONCEPTS specializes in implementing projects across a wide range of sectors that includes office buildings, banks, commercial and services companies, government institutions, among many others.

Integrated Furniture Solutions





maani LEARNING & COMMUNITY

Catering to the minds of tomorrow, maani LEARNING & COMMUNITY specializes in the design and construction of furniture that is befitting of generations that aspire for the future.

By providing superior quality furniture solutions that are affordable, maani LEARNING & COMMUNITY constantly promotes community learning centres and venues by always striving to develop new generations of products that will satisfy the needs of the youth.

Support the Body. Free the Mind



maani LABS

With extensive expertise in designing exceptional laboratory casework layouts, maani LABS incorporates features such as ergonomics, flexibility, and functionality throughout their products' entire range to ensure perfection in any casework selected.

The knowledge acquired throughout our years at maani LABS has proven that creativity and aesthetics are important aspects that our clients seek when selecting casework, as it reflects not only on their image of the facility but also on that of their staff. For that reason, our comprehensive casework line is impeccably designed to meet all architectural standards. Furthermore, its modularity enables our clients to have the flexibility to remodel or move on demand, securing their practice's needs efficiently and effectively.

Designed for Scientific Minds



maani CONTRACT FURNITURE

Regardless of project size or geographic location, maani CONTRACT FURNITURE manufactures and installs customized, high-performance, wooden, fire-rated, and acoustic doors. With maani CONTRACT FURNITURE as the newest furniture division in maani FURNITURE, we are the exceptional interior contracting and fit-out company that supplies wooden furniture, joinery works, cladding solutions, as well as hospitality rooms and accessories.

We take pride in our engineering, precision machines, manufacturing processes, and human resources; as they enable us to provide comprehensive solutions that are particularly tailored to our customers' needs. With the best-in-class quality of products and services, maani CONTRACT FURNITURE offers its clients turnkey solutions to a wide range of building applications, including hotels, commercial buildings, restaurants, airports, banks, and much more.

Furniture Made to Measure



maani COMPONENT

maani COMPONENT creates the most modern furniture designs with its state-of-the-art veneers and bentwood technology, allowing us to offer our clients a varied range of ready-made furniture and furniture components.

Carefully designed and developed by our R&D department, each of our components enjoy both durability and comfort, which are ensured by maani COMPONENT's bentwood technology, the most ergonomic alternative to high-end furniture applications.

Wood Made Flexible





BIOGRAPHIES



Cumulative Engineering

Omar Maani

Chairman



Omar Maani is the founder and chairman of Maani Group, a private sector manufacturing corporation based in the Hashemite Kingdom of Jordan. With a business career that spans more than three decades, Maani is also an experienced politician serving first as the Mayor of Amman, Jordan, from 2006 to 2011, and a Senator in the Jordanian senate as of September 2016. A graduate of the University of Birmingham, UK, with a B.Sc. in Civil Engineering and from the University of Southern California, USA, with an M.Sc. in Construction Management.

As of October 2016, Maani was appointed by Royal Decree as a member on the Board of Trustees at the Crown Prince Foundation (CPF); a foundation that seeks to boost comprehensive development in Jordan's various governorates. In the midst of supporting voluntary, social, and charitable efforts in the Kingdom, CPF carries out its mission by supporting local communities, developing the youth's talents, improving their living conditions, and enhancing their role in development projects.



Cumulative Engineering

Jack Andoni

Chief Executive Officer



Jack Andoni received his B.Sc. in Civil Engineering from Iowa State University, USA, and his MBA in Marketing from Amman Arab University in Jordan. Equipped with over 32 years of experience, his expertise covers construction, manufacturing, and executive management.

Prior to his current position as CEO of maani VENTURES since 2009, Andoni was CEO of maani PREFAB for more than 20 years. In the past, Andoni served as a Site Engineer for two years at the Royal Engineering Corps of the Jordanian army, as well as a project manager for four years at a contracting company.



Cumulative Engineering

Elias Kawar

**Senior Managing Partner – Maani
FURNITURE (maani OFFICE
CONCEPTS - maani LEARNING &
COMMUNITY - maani LABS)**



Elias Kawar is the General Manager and Senior Managing Partner of maani FURNITURE, which entails maani OFFICE CONCEPTS, maani LEARNING & COMMUNITY, and maani LABS. With a B.Sc. in Building Engineering from Bath University, UK, Kawar has over 32 years of experience in manufacturing and executive management.

Prior to his current position, Kawar was CEO at Maani's Specialized Furniture Establishment, and even served in the Jordan Armed Forces. Additionally, Kawar serves as a member in several associations; this includes his position as Vice Chairman at the Jordanian Furniture Manufacturers and Exporters Association (JFEMA), Board Member at the Jordanian Exporters Association (JEA), as well as Board Member at Schneller Vocational School, Amman.



Cumulative Engineering

Khalid Qaramseh

Managing Partner - maani CONTRACT FURNITURE and maani COMPONENT.



Khalid Qaramseh is the General Manager at maani CONTRACT FURNITURE and maani COMPONENT. He holds a B.Sc. in Industrial Engineering from the University of Jordan and has over 23 years of experience in the wood and contract furniture business.

Qaramseh worked at the Specialized Furniture Establishment's design department for five years, followed by working for two years as Factory Manager and four years as Executive Manager in Production Research & Product Development.



Cumulative Engineering

Mustafa Al Jazzi

Managing Partner - maani STEEL and maani STRUCTURES



Mustafa Al Jazzi is the general manager at maani STEEL and maani STRUCTURES. He holds a B.Sc. in Mechanical Engineering from the University of Jordan, and has over 25 years of experience in steel construction, manufacturing, maintenance, purchasing, and executive management, prior to maani VENTURES.



Cumulative Engineering

Jamil Anabtawi

General Manager – maani METALFORM



Jamil Anabtawi joined maani VENTURES in 2010 as the Strategic Planning and Human Resources Director, and is now the general manager at maani METALFORM. He holds a B.Sc. in Mechanical Engineering from City University in London, and has 35 years of experience in manufacturing, project management, customer service, and logistics.

His career began with the Jordan Armed Forces as Project Engineer with the Royal Maintenance Corps for two years, after which he worked with Procter & Gamble Co. in Saudi Arabia and Egypt for 22 years. Thereafter, he served as Customer Service and Logistics Director at Petra Trading & Investment Company (PETICO), and was also General Manager and Project Director for the MENA region at Modular Room Construction (MRC) Company for two years, as well as General Manager at Ittihad Insulating Glass Co. for another two years.



Cumulative Engineering

Qais Baggili

Managing Partner – maani SOLAR



Qais Baggili is the general manager at maani SOLAR. He holds a B.Sc. in Mechanical Engineering from the University of Jordan, and was awarded the Jordan University Scientific Distinction Certificate, rank one, in June of 2004.

Baggili has over 12 years of experience around the region. He worked as a site engineer at Consolidated Contractors Company in Qatar for four years, after which he served as the E&M Procurement Engineer at Abdali Boulevard Project for three years, and as Procurement Manager at Masar United Contracting Co. for another three years.



Cumulative Engineering

Shadi Baqaeen

Deputy Managing Director - maani PREFAB and maani LGS



Shadi Baqaeen is the deputy managing director at maani PREFAB and maani LGS. He holds a B.Sc. in Civil Engineering from Al Balqa University and an MBA in Marketing from NYIT University in Amman. Baqaeen has over 17 years of experience in construction, sales, and manufacturing, with high exposure in the Middle East North Africa region, particularly Qatar, Saudia, Sudan, Euthiopia, and Libya, serving as the Libya country manager from 2005-2013.



Cumulative Engineering

Omar Tarawneh

Deputy Managing Director – maani FURNITURE



Omar Tarawneh is the deputy general manager of maani FURNITURE, which entails maani OFFICE CONCEPTS, maani LEARNING & COMMUNITY, and maani LABS. With a B.Sc. in Mechanical Engineering from the University of Jordan, Tarawneh has over 13 years of experience with leading skills in Product Development, Project Management, and considerable knowledge in furniture manufacturing as well as executive management.

Prior to his current position, Tarawneh worked in different important fields for the company; from Industrial Design & Engineering Management to Business Development. Additionally, Tarawneh is a board member of the Maani Executive Board of Directors and a board member of KAIZEN - Jordan Association.

AMMAN

Corporate Headquarters

Maani Building, Shmeisani, Amman, Jordan

T +962 6 566 94 66 F +962 6 569 02 50

Al-Yadoudeh Industrial Complex

Main Madaba Road, Al Yadoudeh, Amman, Jordan

T +962 6 412 91 19 F +962 6 412 93 39

Al-Thuhaibeh Industrial Complex

Plot 253, Al-Thuhaibeh, Amman, Jordan

T +962 6 479 03 90 F +962 6 479 03 91

Sahab Industrial Complex

377 Sahab, Amman, Jordan

T +962 6 402 24 03 F +962 6 402 24 06

Showroom

257 Mecca St., Amman, Jordan

T +962 6 581 93 44 F +962 6 585 08 19

JEDDAH

60 King Fahed St., Jeddah, Saudi Arabia

T +966 2 66 010 14 F +966 2 66 947 57

CAIRO

12 (El-Amal), Josef St., Nozha El Gedida, Cairo, Egypt

T +2 02 620 21 44/5 F +2 02 620 21 45

maani VENTURES

www.maani.com

